



Over 24 Years of X-ray Expertise

Highest Image Quality in CCD

Unique Power Management

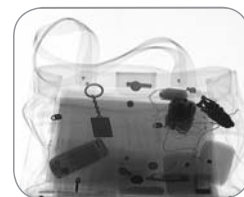
Used Worldwide



FoXraylle

Vidisco's **FoXraylle** X-ray inspection system is the only CCD based system to offer a 10 bit image (1,024 Grey levels), combined with 1.4 lp/mm – 40 AWG resolution. Images of the highest quality in CCD technology are available on your laptop screen in seconds. The system's carrying case (or backpack) also serves as a working platform for convenient operation anywhere, anytime and from a safe distance. Only one approach is required to a suspect object before its inspection.

The **FoXraylle** system is 100% portable and fully battery operated. The unique power management solution enables over 14 days of work on a single battery charge, as well as an unlimited time span on external (AC) power. Integrated wireless solutions and robot ready options provide further operational flexibility. Thousands of units (8 generations) used in security applications around the world are the proof of the **FoXraylle** reliability, imagers' robustness and user safety.



FoXraylle



- Real Time Images: achieved in seconds! Minimum time to image, take an X-ray at a click of a button.
- Safest Systems in the World: One approach, no down-range changing of batteries, ever.
- Highest Image Quality: First and only 10bit (1,024 Grey levels) CCD system. Four times more dynamic range than standard CCD.
- Three VCU Sizes. No Dead Space: 10", 16" and super sized 22". Three sided imaging from the edge.
- Longest Battery Operation Time: Over two weeks on one charge.
- Robot Ready VCU as a Standard: Full integration with leading EOD ROV's. No human approach down range, highest operator safety level.
- Integrated Wireless Solution: Digital wireless system; 300m (line of sight).
- High-Power Long Range Wireless Options: Up to 1500m (line of sight).
- Unique External Video Camera: Live video of examined object. External images stored automatically with corresponding X-ray image in the database.
- Proprietary Algorithms: Unprecedented immediate results.
- One Platform for All Imagers: Interchangeable with digital flat panels, **FlashX**, **BlazeX**, **RayzorX** and **BoltX**.

Technical Specifications*

Imaging Area:	VCU-10e: 19 X 25cm (~8 X 10 inch) Just 1.5 mm from bottom and 2 mm from detector side – No Dead Space!
Imager Size:	VCU-10e: 38 X 26 X 14cm (h,w,d) – including removable handle (~14.9 X 10.2 X 5.5 inch)
Imager Weight:	VCU-10e: 5.55 Kg including battery
Imager Sensor Type:	CCD immediate image capture, no moving parts, no scanning
Additional Imagers' Imaging area	VCU-16e: 30.5 X 40cm (~12 X 16 inch) VCU-22e: 42 X 56cm (~16.5 X 22 inch)
Dynamic Range:	10 bit (1,024 Grey levels)
Additional Imagers' Size	VCU-16e: 56 X 41 X 21cm (h,w,d, ~22 X 16 X 8.2 inch) VCU-22e: 66 X 56 X 21cm (h,w,d, ~ 26 X 22 X 8.2 inch)
Resolution:	VCU-10e: 1.4 lp/mm, 40AWG
Power Supply:	Over 14 days of battery operation on one charge AC 110/220V for unlimited period of time
Optional Accessories Available:	DWSe: Integrated Digital Wireless System – connecting laptop to VCU 300m (wireless) Dual WiFi X LR: Long Range Wireless Option – up to 1500m (~ 1 mile!) line of sight WLXe: Integrated Wireless X-ray – eliminates cable connection to X-ray (Golden) Extension Cable: Up to 200m distance DC/AC Car Inverter: For unlimited power supply from a vehicle - power down the line External Camera: For external color images & video
Software:	Easy to use, powerful proprietary Xbit software for security users

* System configuration is subject to market changes and manufacturer specifications