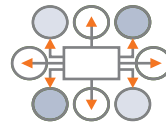


Mid-size Smart DR Solution



Portable, digital radiography system with 16 bit images



Easy setup and quick results - save time and money



Robust design for NDT needs – portable, wireless and battery operated

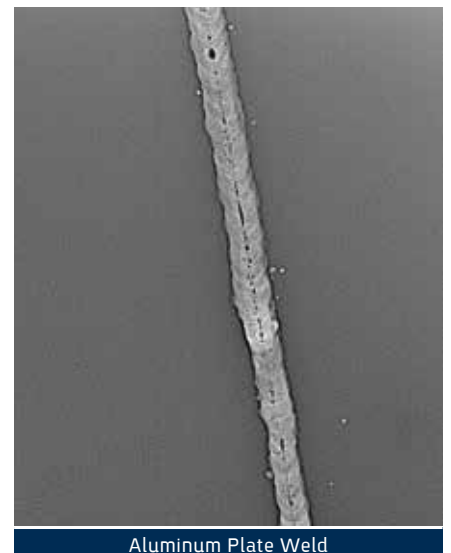


Meet all your detection needs at an affordable price

The SparX Pro was designed to meet the specific needs of the NDT digital radiography operator with its overall unique design and capabilities.

- ✦ 325x260 mm (~12.7x10.2") imaging area
- ✦ 127 μ m
- ✦ Lightweight - 3.3. kg (7.2lbs)
- ✦ Minimal dead space - just 8.5mm (~0.3") from edges
- ✦ Internal wireless capabilities
- ✦ Battery operated

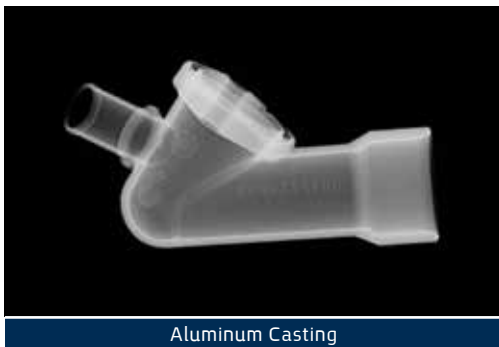
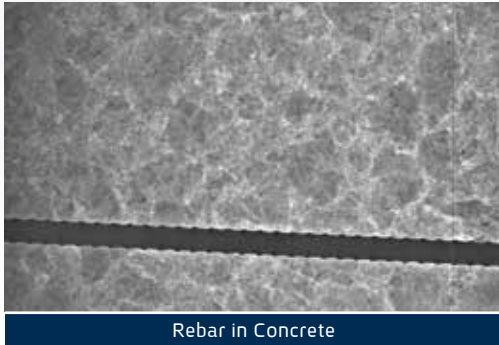
As with all Vidisco systems, the SparX Pro brings forward the best imaging capabilities in a design suited for a variety of challenging applications.



Aluminum Plate Weld

SparX Pro

Industry Leading Software



The Xbit Pro software offers simple to operate yet highly advanced tools & processes - for the ultimate image quality alongside user convenience.

- ✦ Acquire, enhance, analyze and manage through a single, all-included software
- ✦ Minimal time & steps between you and getting the image you need
- ✦ Best one-click tools to get clear visuals with minimal x-ray dose
- ✦ Easy to use image management
- ✦ Automatic processes for high quality images

The proprietary software features includes multiple available image formats, 800% zoom, Advanced Stitching, Automatic Wall Thickness Measurement, Statistics & Measurements, First Image Restore option and more.

SparX Pro Technical Specifications

**Specification	SparX Pro
Imaging Area:	320 x 255 mm (~12.8 X 10.2")
Imaging Area Position	Right & Bottom Borders: 8.5mm (~0.3")
Imager Size (h,w,d):	385 X 320 X 18 mm (~15.2 X 12.6 X 0.7 ")
Imager Weight (with battery):	3.3 Kg (~7.2 lbs)
Imager Sensor Type:	Amorphous Silicon (a-Si) Digital Detector Array (DDA)
Grey Levels:	16 bit (65,536 Grey Levels)
Pixel Pitch:	127 µm
Power Supply:	Over 4 hours
Optional Accessories:	WiFi X: Digital Wireless system - connecting laptop to Imager 300m (line of sight) High Power Wireless - up to 1500m (~ 1 mile!) line of sight Wireless X-Ray control for Golden Engineering Pulsed Sources Smart 150 Cable: up to 150/200m distance with cable DC/AC Car Inverter: for unlimited power supply from a vehicle Tripod Mount: compatible with any standard tripod

Vidisco systems come as an inclusive package according to user needs, including all software features and spare parts.

**All specification are subject to change

