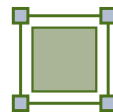


# FoXraylle

Durable, Long Established  
Digital X-Ray Systems



Over 25 years of x-ray expertise with worldwide reputation and use



Available in two optional sizes: 10", 16"



Highest Image Quality:  
First 10bit CCD systems



Three sided imaging possible with minimal dead space

## Long Lasting, Durable CCD Based System for Field Use

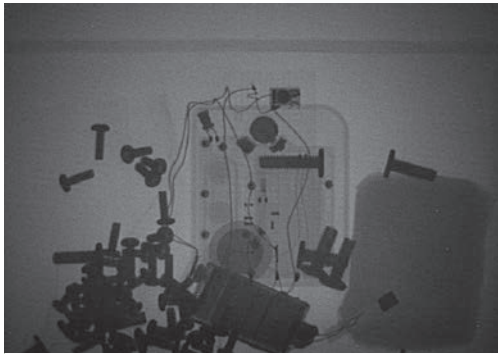
Vidisco's FoXraylle X-ray inspection system is the only CCD based system to offer a 10 bit image (1,024 Grey levels), combined with 1.4 lp/mm – 40 AWG resolution. Images of the highest quality in CCD technology are available on your laptop screen in seconds. The system's carrying case (or backpack) also serves as a working platform from a safe distance. With countless systems in use throughout the world for many years – the FoXraylle is reputable for its long lasting durability and stability.

The FoXraylle system is 100% portable and fully battery operated. The unique power management solution enables over 14 days of work on a single battery charge, as well as an unlimited time span on external (AC) power. Integrated wireless solutions and robot ready options provide further operational flexibility.

# FoXraylle Explore, Detect, Go



1 Pulse Image



After just 1 click

Simple to operate enhancement features include 800% zoom, Window Leveling, Adaptive Histogram, Stitching, Dual Energy Probe, Sharpening, First image restore option and more.

Comprehensive Database - X-ray image records include external images, automatic info, easy search & sharing, while keeping your information safe in a special file format and on the operator's laptop.

- ✦ Intuitive software interface designed for real-users
- ✦ Minimal time & steps between you and getting the image you need to see
- ✦ Best one-click tools to get clear visuals with minimal x-ray dose
- ✦ Easy to use, flexible image management

## FoXraylle Technical Specifications

Specification**	FoXraylle
Imaging Area:	<b>FoXraylle VCU-10e</b> 19x25cm (~8x10 inch) <b>FoXraylle VCU-16e</b> 30.5x40cm (~12x16 inch)
Imager Size: (with battery and handle)	<b>FoXraylle VCU-10e</b> 36x26x14cm (h,w,d) (~14.9x10.2x5.5 inch) <b>FoXraylle VCU-16e</b> 56x41x21 (h,w,d) (~22x16x8.2 inch)
Imaging Area Position: (Images area edges distance)	1.5 mm from bottom & 2 mm from side
Imager Weight: (with battery)	<b>FoXraylle VCU-10e</b> 5.55 Kg (~12.2lbs) <b>FoXraylle VCU-16e</b> 10.8 Kg (~23.8lbs)
Imager Sensor Type:	CCD immediate image capture, no moving parts, no scanning
Dynamic Range:	10 bit (1,024 Grey levels)
Resolution:	FoXraylle VCU-10e 1.4 lp/mm, 40AWG
Optional Accessories:	DWSe: Integrated Digital Wireless System – connecting laptop to VCU 300m WLXe: Integrated Wireless X-ray – eliminates cable connection to X-ray Extension Cable: Up to 200m distance DC/AC Car Inverter: For unlimited power supply from a vehicle - power down the line External Camera: For external color images & video
Software	Easy to use, powerful proprietary Xbit software for security users



\*\* All specifications are subject to changes