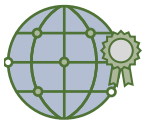
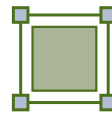


# Mobi

## The Finest Details in the Largest Image



**High Quality at an Affordable Price**  
Computed Radiography



**Large Imaging Area**  
Several 14"x17" plates can be assembled together to form a large imaging area

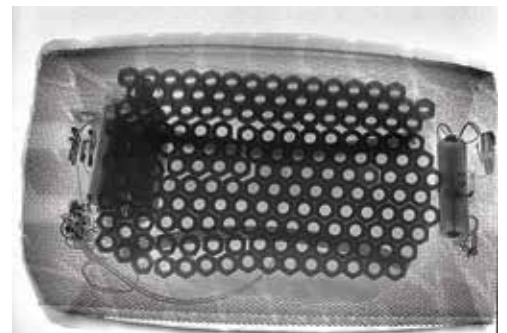


**Thin and Flexible**  
CR is phosphor film based and can be set up in tight places



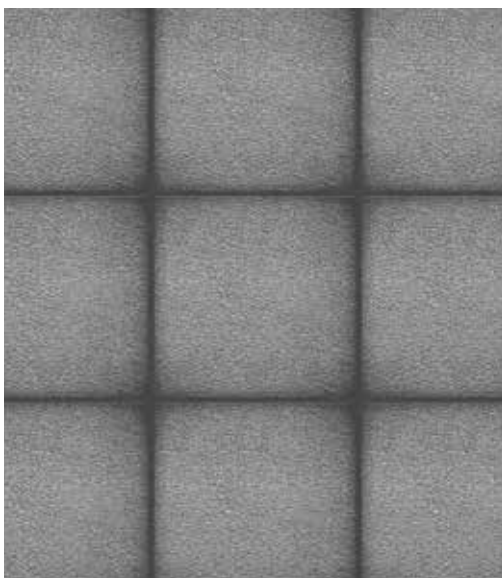
**Superb Image Quality**  
Optional resolution of 86 $\mu$

Computed Radiography (CR) is a film based technology which creates images with incredibly high resolution. The images are scanned on the spot and appear on the computer screen so they can be easily manipulated, enhanced rapidly and stored digitally. This technology has terrific price-performance value. Less expensive in compare to other technologies, CR has the ability to scan large objects while not compromising on image quality.





CR uses a phosphor imaging plate to obtain an image. The image is then scanned by the CR reader. Within a minute the image is displayed on the computer screen and can be digitally manipulated and analyzed. The digital images are ready to be stored, archived or sent on the spot. Operation can be done fully wireless and all elements are controlled through the software. Average scan time is between 52 to 86 seconds, depending on type of resolution, 86 $\mu$  or 160 $\mu$ .



Price is no longer an issue with large area scanning. Reusable up to 5000 times, each phosphor plate is affordable & can be tiled to scan larger areas.

Plate sizes available

- 10"x12" (25 x 30 cm, upon request)
- 14"x17" (35 x 43 cm)

# Vidisco Solutions

Mobi offers top quality imaging capabilities at a very affordable price. Like other Vidisco systems, it is portable and designed for EOD units vans. Mobi plates have the unique advantage of being thin and flexible if needed. It is wireless and has a large imaging area, so it can be convenient for a great variety of applications. Mobi comes with the VEO software which allows the operator to intuitively enhance, transfer and store the images.



**Scan with 1 click** – Vidisco's user oriented design ensures that all its systems have a friendly user interface and images can be captured with a simple click of a button.

**Vidisco's quality and guarantee** – Vidisco, known for its dedication to manufacturing the highest quality products, brings CR systems to a top-notch level as it has done with all its products for nearly 30 years.



**Support** – Vidisco designs every system to be simple and reliable in order to save its operators money and time in the field with ongoing support, maintenance and assistance.

**3 interchangeable parts** – Mobi is the only CR system that is field serviceable with only 3 parts designed to be replaced by the operator if and when needed.

**Wireless** – Mobi has a fully wireless option of up to 300m with a simple USB connection.

**Mobi** is Vidisco's new CR technology X-ray system. It was designed with the most advanced technology to fit the needs of the security operators in the field. The system comes in a portable case that fits in a vehicle; only the X-ray source and plate need to be carried downrange. With a single click, an X-ray image can be taken and comfortably analyzed with the software's enhancement tools. This reliable, easily serviceable system also offers superb image quality and penetration. It is the perfect cost-effective, security inspection system.

## Technical Specifications

Specification **	Mobi
Scanner Size	~ 68 x 45 x 34 cm ~ 26.7" x 17.7" x 13.4"
Weight	~ 25 kg , 55lbs
Large Plate	~ 35 x 43 cm ~ 14" x 17"
Small Plate (Optional)	~ 25 x 30 cm ~ 10" x 12"
Resolution	6 lp/mm
Scan Time	~ 52 sec
Pixel Pitch (High)	86 μ
Pixel Pitch (Low)	160 μ
Dynamic Range	16 bit
Connection	USB
Wireless	Up to 300m line of sight
Support	Only 3 replaceable parts
All stored in a single case	

\*\* All specification subject to change

