

BoltXPro

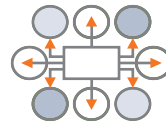
Compact Imager System for Fine Resolution DR



Ultra-compact: ~1.5 kg (3.3 lbs), and 195x125x35mm (~7.6 x 4.9 x 1.3")



Highest quality images with any x-ray/gamma source



Field designed system, accessories & software for intuitive, reliable use



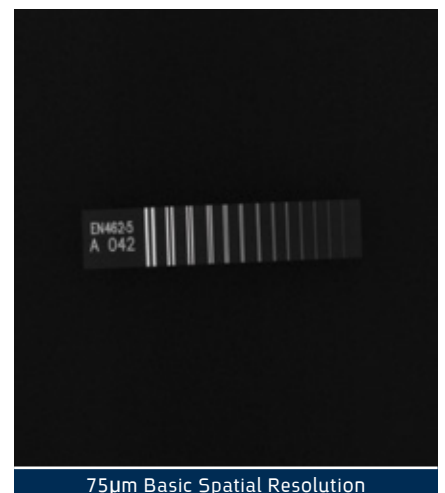
Immediate, automated results on the spot - save trouble, time and money

High Resolution Comes in a Compact Solution

For conducting high resolution inspections in small or hard-to-reach places, Vidisco specifically created an ultra-compact system to meet the demand.

- ✘ CMOS technology
- ✘ 14 bit images
- ✘ Field ready: mobile & battery operated

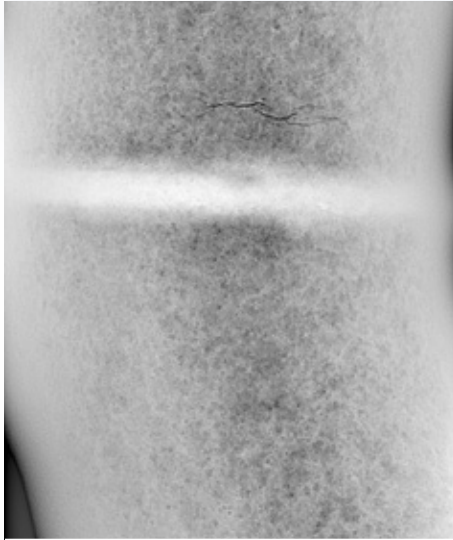
The BoltX Pro has proven success in a variety of challenges such as high power lines or fine quality weld inspections, thanks to its unique attributes. It comes with the Vidisco guarantee of decades of experience and service.



75µm Basic Spatial Resolution

BoltXPro

Industry Leading Imaging Software



Water pipe crack (image courtesy of Inspecta)

The Xbit Pro software offers simple to operate yet highly advanced tools & processes - for the ultimate image quality alongside user convenience.

- ✦ Acquire, enhance, analyze and manage through a single, all-included software
- ✦ Minimal time & steps between you and getting the image you need
- ✦ Best one-click tools to get clear visuals with minimal x-ray dose
- ✦ Easy to use image management
- ✦ Automatic processes for high quality images

The proprietary software features include multiple available image formats, 800% zoom, Advanced Stitching, Automatic Wall Thickness Measurement, Statistics & Measurements, First Image Restore option and more.

BoltXPro Technical Specifications

**Specification	BoltXPro
Imaging Area:	145 X 115 mm (~5.7 X 4.5")
Imaging Area Position:	6 mm from bottom and sides
Imager Size (h,w,d):	195 X 125 X 35 mm (~7.6 X 4.9 X 1.3")
Imager Weight:	1.5 Kg (~3.3 lbs)
Imager Sensor Type:	CMOS Digital Detector Array (DDA)
Grey Levels:	14 bit (16,384 grey levels)
Pixel Pitch:	75 µm
Battery Operation:	Over 5 hours of battery operation
Optional Accessories:	WiFi X: Digital Wireless system - connecting laptop to Imager 300m (line of sight) High Power Wireless - up to 1500m (~ 1 mile) line of sight Wireless X-Ray control for Golden Engineering Pulsed Sources Smart 150 Cable: up to 150/200m distance with cable DC/AC Car Inverter: for unlimited power supply from a vehicle Extremely fast communications option with the Split Adaptor

Vidisco systems come as an inclusive package according to user needs, including all software features and spare parts. Ask your Vidisco representative for more details.

** All specifications are subject to change

