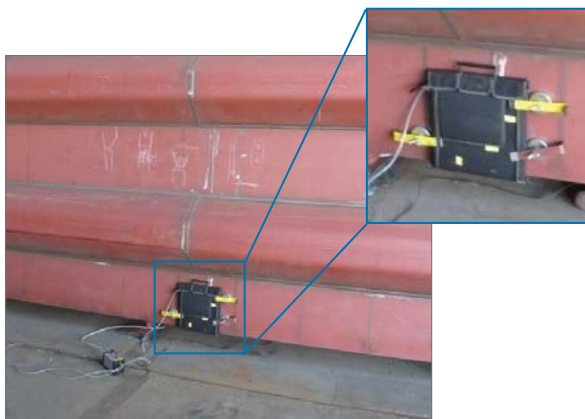




## Digital Radiography For Shipyard and Weld Inspections

- Top Quality Images
- Fastest Imaging Time
- Immediate Detection on Site
- Increased Safety and Reduced Doses
- Compliant with Current Industry Standards



### Facilitating Welding and Shipyard NDT

Ship building involves countless welds: When constructing a ship's hull, all welds must be tested. NDT testing equipment is crucial to modern shipyards, which must increase manufacturing capabilities in order to remain profitable. Vidisco's cutting edge portable digital X-ray systems play a major role in keeping highly accurate testing up to the pace of production.

Featuring a range of thin digital imagers, all Vidisco systems are easily set up to achieve penetration of various materials and thicknesses. Vidisco fully battery operated, ruggedized X-ray systems can be carried to any location. The systems' carrying cases or backpacks also serve as their operational platforms. Equipped with "DC down the line," the systems are designed for long operation periods at high energy levels, also with Isotopes. Built-in 300m wireless facilitates rapid set up and smooth operation for seamless imaging, while avoiding having to pull cables for long distances in the production area.

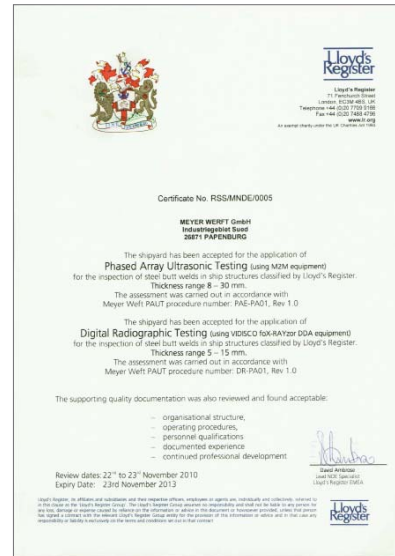
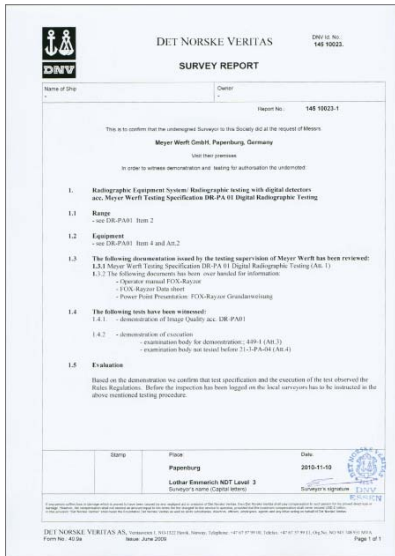
Highest quality images are available immediately on your laptop screen, enabling delineation of hairline cracks. Dose level is decreased and exposure times are reduced to mere seconds. The Automatic Stitching function offered by Vidisco's **XbitPro** proprietary software enables stitching of a number of images to form a single image of a long weld.

# Vidisco DR Systems Support Industrial Standards

## Vidisco Digital Radiography Systems Meet International NDT Standards

As a world leader in the design and manufacturing of cutting-edge digital X-ray equipment, Vidisco ensures that its portable DR systems comply with the latest standards on a continuous basis.

### Shipyard Certification



- **Outstanding Penetration Capabilities:** Highest penetration of a variety of steel thicknesses
- **Resolution:** 3.5 – 3.97 lp/mm (under 3 mm of steel)
- **Immediate Top Quality Images:** Onsite verification, wide dynamic range
- **Cost Effective:** Minimal area shutdown, no returning for reshoots, no consumables, enables use of low activity Isotopes (prolong Isotope lifetime)
- **Fast and Safe Operation:** Reduced exposure time, shortest time to image
- **Compatibility:** Can be integrated with various X-ray sources including pulsed X-ray, continuous potential X-ray, high frequency and Isotopes
- **100% Battery Operation:** Fully battery operated, over 5 hours of continuous work onsite on batteries, unlimited work with external power connection
- **Power Supply:** The system self-charges during operation when connected to any external power source such as 110/220 AC or even a DC/AC vehicle inverter
- **Wireless Solutions:** Built-in fast wireless for 300m (line of sight). High-powered wireless up to 1500m (line of sight). Entire system can be operated on wireless.
- **Easy to use:** Simple adaptation to current procedures



# Digital Radiography Proprietary Software

## XbitPro Software for Immediate Documentation, Analysis and Data Sharing

### All-in-One Professional Software

Vidisco XbitPro software combines a user friendly interface with the best analysis tools available in the market. Advance yourself; use the X-ray inspection system of the 21st century.

- **Automatic Calibration**

To optimize performance and quality, Vidisco XbitPro software enables automatic calibration procedures that can be executed at the click of a button. Multi point calibration is generated in a fast and simple process using an automatic calibration wizard.

- **Analysis Tools**

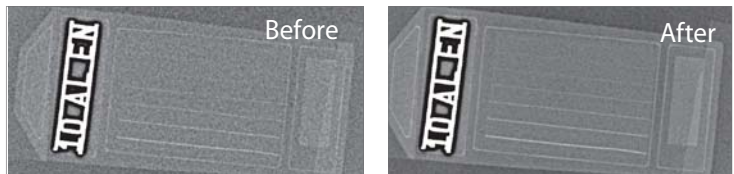
- Wall thickness measurement (auto detection)
- Line profile
- Image statistics (SNR, standard deviation, etc.)

- **Image Enhancing Tools**

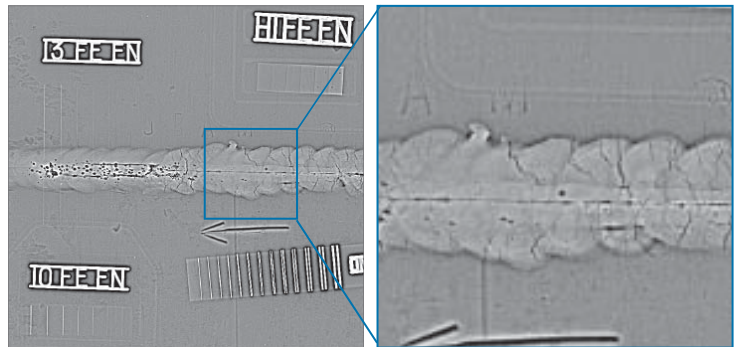
Auto Window (Grey Scale) Leveling, Revelation HPF, Adaptive Histogram, SNR improvement tool (Averaging), Sharpening, 800% Zooming

- **Database Management**

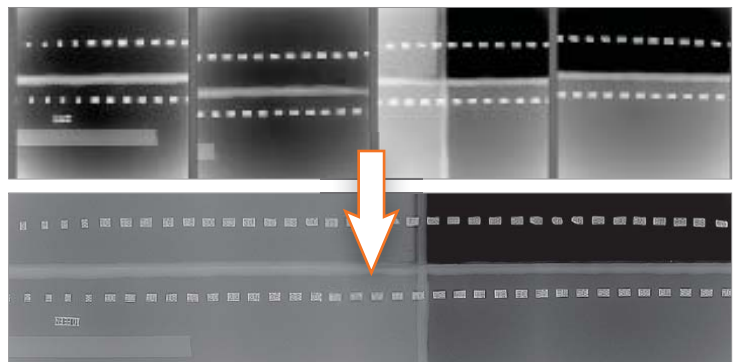
Images and corresponding information are easily stored, retrieved and shared with others. External images are stored together with their corresponding X-ray images. Creating and saving annotations, images and reports is easy.



Automatic Calibration and Averaging



Bam5 weld viewed with HPF and Zoom



4 images automatically stitched together to show 48cm ship weld (taken with RayzorX Pro and XRS-3)

### One Touch Image Enhancing Tools – High Pass Filters

Enable easy viewing of materials with different specialized high pass filters. Moreover recording of image enhancement procedures with a macro can be easily performed for accurate repetition in future.



Weld X-ray before Image Enhancement



12mm Steel Weld X-ray Image after "Revelation" High Pass Filter



# X Pro Series: Portable Digital X-ray Systems



**FlashXPro**

14" X 17" Imaging Area



**RayzorXPro**

9" X 9" Imaging Area



**BoltXPro**

6" X 5" Imaging Area

## Vidisco's Series of Digital Radiography Systems

Conveniently based on a flexible Plug & Play shared platform, Vidisco DDA's achieve unmatched performance, enabling the delineation of even the tiniest of hairline cracks. The systems' thin digital imagers can easily be carried by a single operator and inserted in tight and elevated locations including between welds and hulls, serving as complete, out-of-laboratory X-ray devices in the field and ensuring a streamlined and quick shipyard NDT inspection process.

Category	FlashXPro	RayzorXPro	BoltXPro
Imaging Area (mm):	342 X 432 mm	222 X 222 mm	145 X 114 mm
Imaging Area Position:	30mm from bottom and sides	5 mm from bottom 7 mm from left side	6 mm from bottom and sides
Imager Weight:	4.8 Kg (~10.6lb)	3.5 Kg (~7.7lb)	1.5 Kg (~3.3lb)
Dynamic Range:	16 bit (65,536 Grey Levels)	14 bit (16,384 Grey Levels)	14 bit (16,384 Grey Levels)
Resolution:	~3.5 lp/mm (also behind 3mm of Steel)	3.5 lp/mm	6.6 lp/mm
Pixel Pitch:	144 µm	143 µm	75 µm
Robust, Field Design:	Yes	Yes	Yes
Battery Operation:	Over 5 hours	Over 5 hours	Over 5 hours
Battery Level Indication:	ICU & Software	ICU & Software	ICU & Software
Charge during nonstop AC operation:	Yes	Yes	Yes
Memory Free Battery:	Yes	Yes	Yes
Support Vehicle DE/AC Inverter:	Yes	Yes	Yes

\* Specifications are subject to market and manufacturer changes