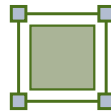


FoXraylle

Durable, Long Established
Digital X-Ray Systems



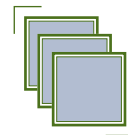
Over 25 years of x-ray expertise with worldwide reputation and use



Available in two optional sizes: 10", 16"



Highest Image Quality:
First 10bit CCD systems



Three sided imaging possible with minimal dead space

Long Lasting, Durable CCD Based System for Field Use

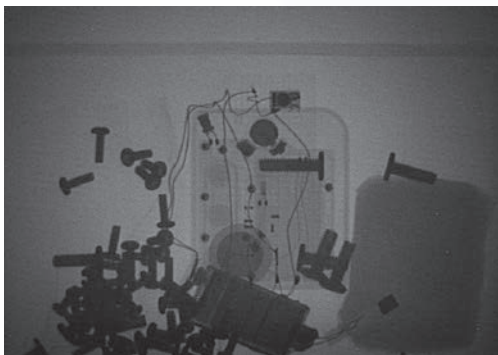
Vidisco's FoXraylle X-ray inspection system is the only CCD based system to offer a 10 bit image (1,024 Grey levels), combined with 1.4 lp/mm – 40 AWG resolution. Images of the highest quality in CCD technology are available on your laptop screen in seconds. The system's carrying case (or backpack) also serves as a working platform from a safe distance. With countless systems in use throughout the world for many years – the FoXraylle is reputable for its long lasting durability and stability.

The FoXraylle system is 100% portable and fully battery operated. The unique power management solution enables over 14 days of work on a single battery charge, as well as an unlimited time span on external (AC) power. Integrated wireless solutions and robot ready options provide further operational flexibility.

FoXraylle Explore, Detect, Go



1Pulse Image



After just 1 click

Simple to operate enhancement features include 800% zoom, Window Leveling, Adaptive Histogram, Stitching, Dual Energy Probe, Sharpening, First image restore option and more.

Comprehensive Database - X-ray image records include external images, automatic info, easy search & sharing, while keeping your information safe in a special file format and on the operator's laptop.

- ✦ Intuitive software interface designed for real-users
- ✦ Minimal time & steps between you and getting the image you need to see
- ✦ Best one-click tools to get clear visuals with minimal x-ray dose
- ✦ Easy to use, flexible image management

FoXraylle Technical Specifications

Specification**	FoXraylle
Imaging Area:	FoXraylle VCU-10e 19x25cm (~8x10 inch) FoXraylle VCU-16e 30.5x40cm (~12x16 inch)
Imager Size: (with battery and handle)	FoXraylle VCU-10e 36x26x14cm (h,w,d) (~14.9x10.2x5.5 inch) FoXraylle VCU-16e 56x41x21 (h,w,d) (~22x16x8.2 inch)
Imaging Area Position: (Images area edges distance)	1.5 mm from bottom & 2 mm from side
Imager Weight: (with battery)	FoXraylle VCU-10e 5.55 Kg (~12.2lbs) FoXraylle VCU-16e 10.8 Kg (~23.8lbs)
Imager Sensor Type:	CCD immediate image capture, no moving parts, no scanning
Dynamic Range:	10 bit (1,024 Grey levels)
Resolution:	FoXraylle VCU-10e 1.4 lp/mm, 40AWG
Optional Accessories:	DWSe: Integrated Digital Wireless System – connecting laptop to VCU 300m WLXe: Integrated Wireless X-ray – eliminates cable connection to X-ray Extension Cable: Up to 200m distance DC/AC Car Inverter: For unlimited power supply from a vehicle - power down the line External Camera: For external color images & video
Software	Easy to use, powerful proprietary Xbit software for security users



** All specifications are subject to changes