

The Finest Details in the Largest Image



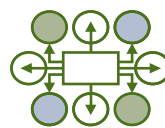
World leading quality portable x-ray system



Easy setup & quick results – safely explore IEDs in minimum time & risk



Field design for security needs – battery operated, robust and reliable



Solution for any situation – line of accessories for every need

Highest Quality Portable Digital X-Ray System

The FlashX system guarantees the user enjoys the best image quality portable digital x-ray system can offer. With years of experience and daily use by top units throughout the world – the FlashX is a reliable, field ready, user friendly complete system for x-ray detection.

With the large imaging area (~14x17") and 16 bit images, the FlashX is up to the task of exploring large objects while revealing the fine details. With a variety of complimentary accessories, the user

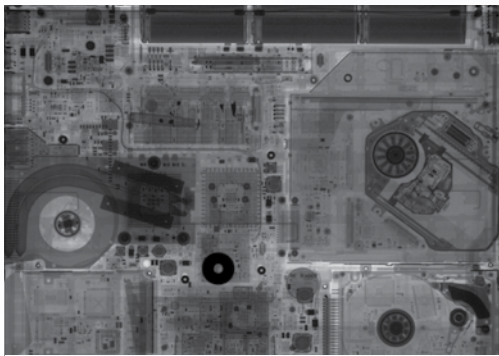
finds a solution for every situation – organic detection, quadrupling the imaging area, working wireless in urban areas with interferences and more. The FlashX will do the job while carrying up to ~220lbs (100kg) load and taking drops of as much as 70cm, while working either wired or completely wireless.

The FlashX is ready for the field, reliable, stable and is a world leading, top quality panel.

FlashX Explore, Detect, Go



1Pulse Image



After just 1 click

Simple to operate enhancement features include 800% zoom, Window Leveling, Adaptive Histogram, Stitching, Dual Energy Probe, Sharpening, First image restore option and more.

Comprehensive Database - X-ray image records include external images, automatic info, easy search & sharing, while keeping your information safe in a special file format and on the operator's laptop.

- ✦ Intuitive software interface designed for real-users
- ✦ Minimal time & steps between you and getting the image you need to see
- ✦ Best one-click tools to get clear visuals with minimal x-ray dose
- ✦ Easy to use, flexible image management

FlashX Technical Specifications

Specification **	FlashX
Imaging Area (mm):	342 X 432 mm (~13.5X17")
Imaging Area Position:	30mm from bottom and sides
Imager Size:	466 X 488 X25.5mm (h,w,d) (~18.3X19.2X1")
Imager Weight:	4.8 Kg (~10.6lbs)
Resolution/Dynamic Range:	16 bit (65,536 grey levels)
Pixel Size:	144 µm
Robust, Field Design:	Battery Operated (over 5 hours), Rugged Design
Charge During Nonstop AC Operation:	YES
Support Vehicle DC/AC Inverter:	YES
Accessories:	Various Plug & Play accessories supported
Software:	Advanced proprietary Xbit software for security operators

** All specifications are subject to changes

